

THE
HAWKINGS
ALCONBURY WEALD



THE
HAWKINGS



Rent easy. Live better.



THE
HAWKINGS

**A collection
of stylish
2, 3 & 4 bedroom
homes to rent**





Expertly designed for a better way of living.

The Great Indoors

The Hawkings is a collection of 49 homes, with 2, 3 and 4 bedroom houses, along with five 2 bedroom apartments. The properties are stylishly designed and meticulously appointed with state-of-the-art finishes and sustainable products throughout. Ready for you to move in, apply your personal touches to make it your home. Every home also features smart home tech, Solar PV panels and EV charging point enabled. The Hawkings provides the perfect blend of modern, stylish living, with considerations for energy efficiency and green open spaces.

The Great Outdoors

Parks, green spaces on your doorstep, beautiful skies at night and an exciting community of like-minded families are just some of the reasons people choose Alconbury Weald.

From pocket-parks and play areas to over 200 acres of woodland, Alconbury Weald's green space has been designed with not only fun and leisure in mind, but also to enhance an abundance of natural habitats that support a wide range of wildlife.



**NEW BUILD
QUALITY HOMES**



**PET
FRIENDLY**



**PROFESSIONAL
LANDLORD**



**GREEN
OPEN SPACES**





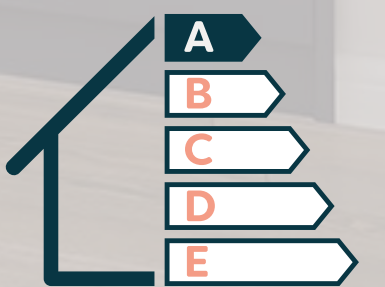
Considered design & function



HIGH SPECIFICATION



SMART TECH THROUGHOUT



ENERGY EFFICIENT HOMES



THE HAWKINGS

ALCONBURY WEALD



The siteplan.

-  **The Dunlin**
TWO BEDROOM HOUSE
-  **The Fulmar**
THREE BEDROOM HOUSE
-  **The Harrier**
THREE BEDROOM HOUSE
-  **The Kingfisher**
THREE BEDROOM HOUSE
-  **The Osprey**
FOUR BEDROOM HOUSE
-  **The Skylark**
TWO BEDROOM APARTMENT

THE DUNLIN



THE FULMER



THE HARRIER



The choice is yours.

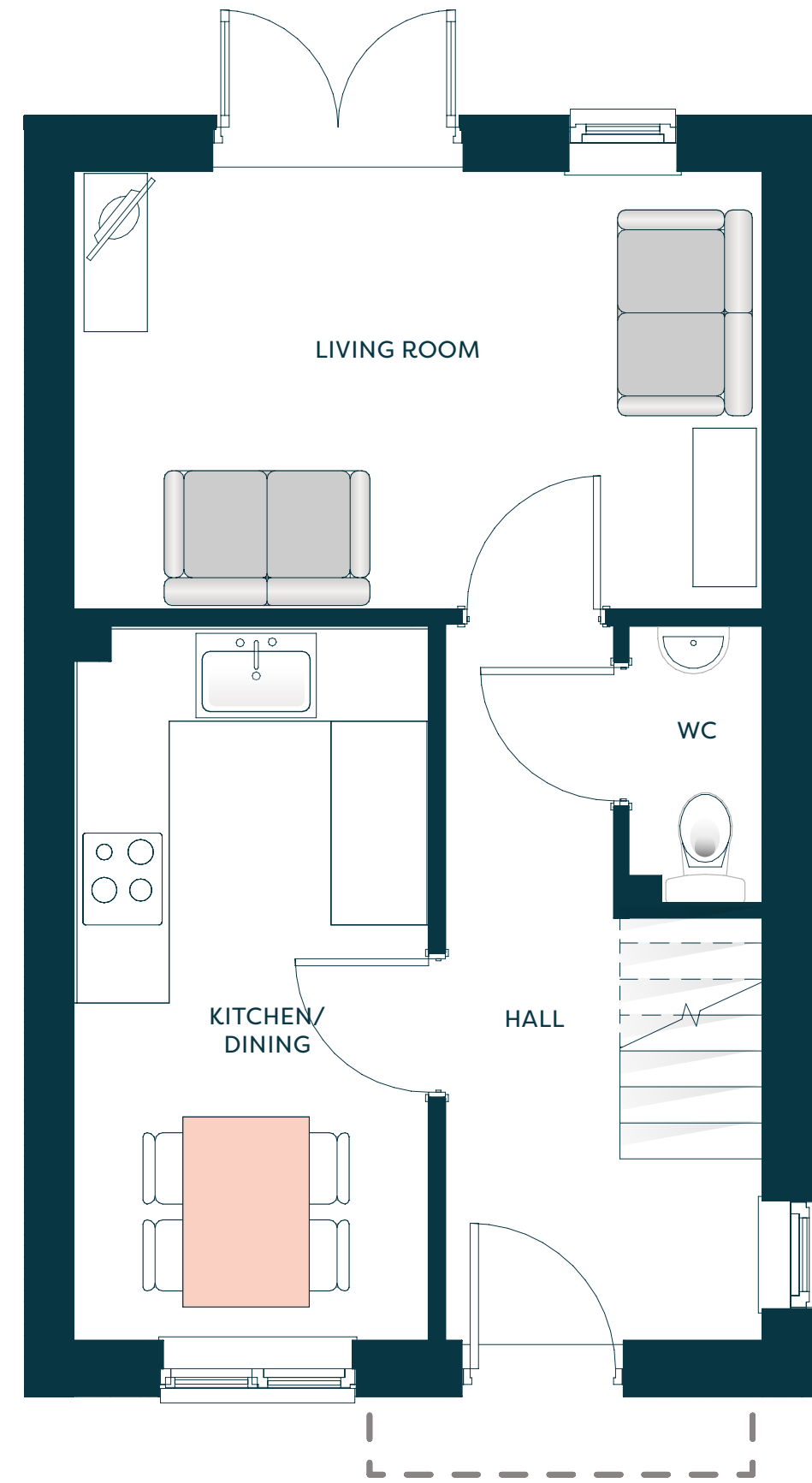
Superbly appointed with modern features and finishes. A collection of 2, 3 and 4 bedroom houses, along with five 2 bedroom apartments to rent.



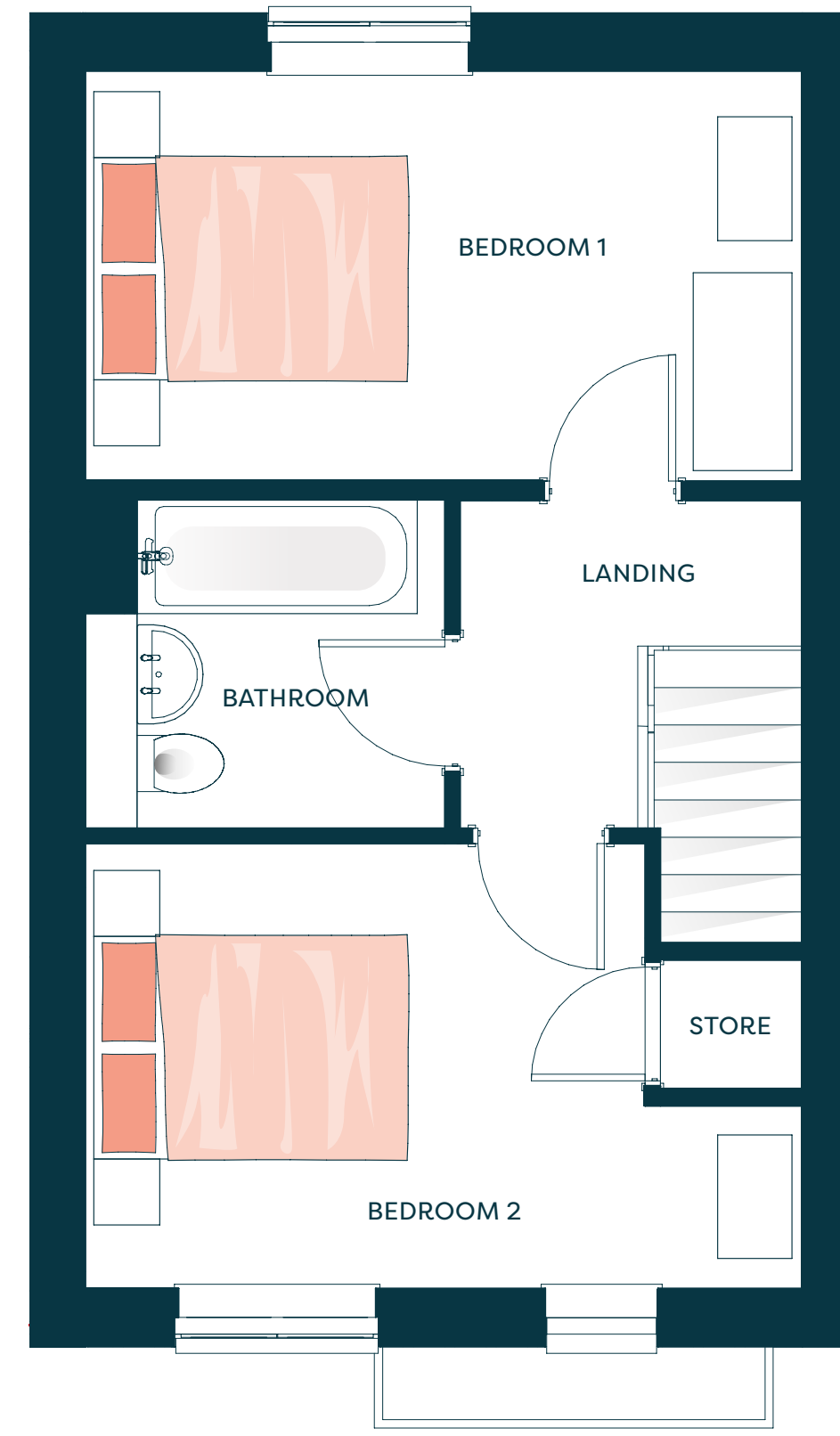
The Dunlin

Two bedroom house

667.4 sq ft (62 sq m)



GROUND FLOOR



FIRST FLOOR

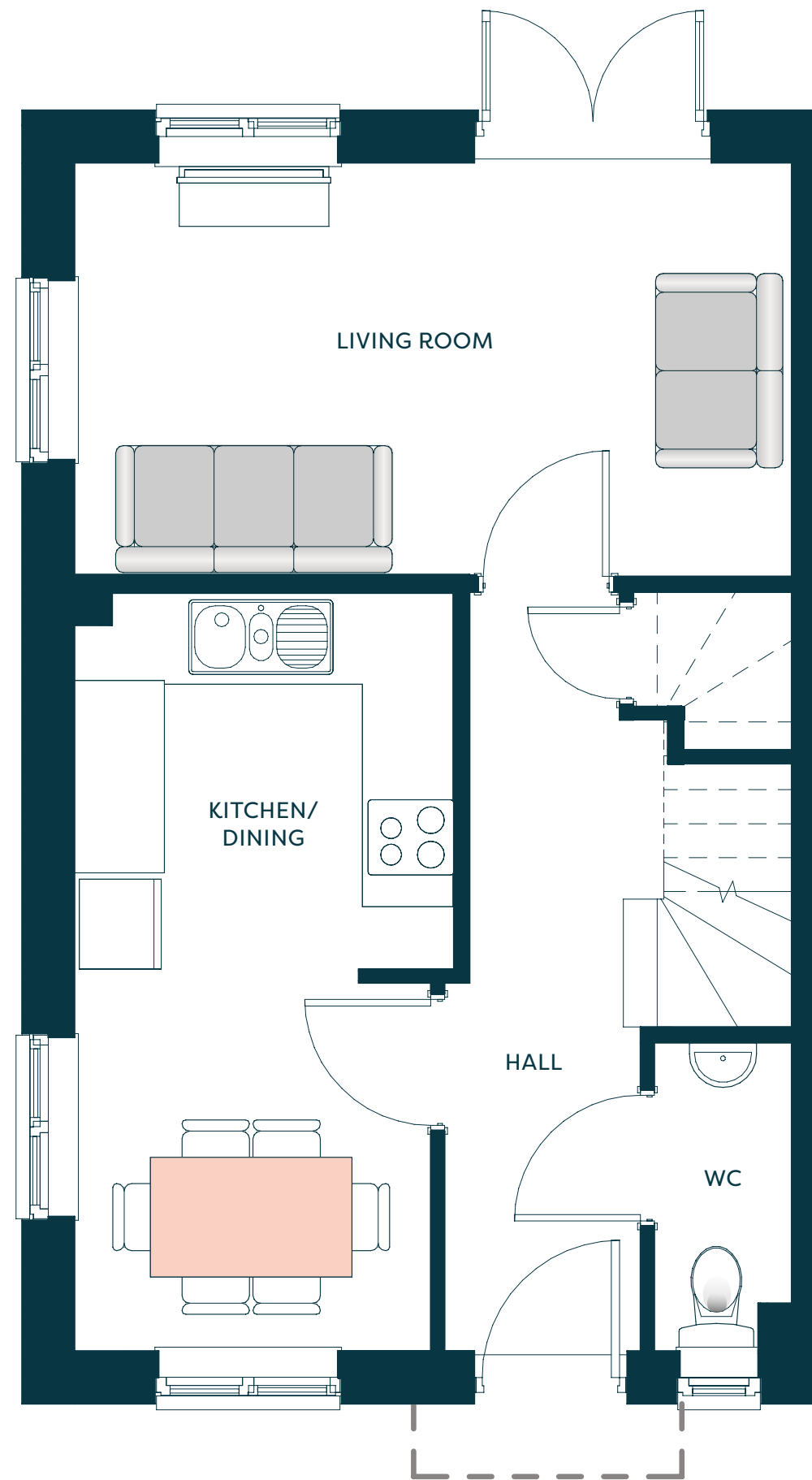




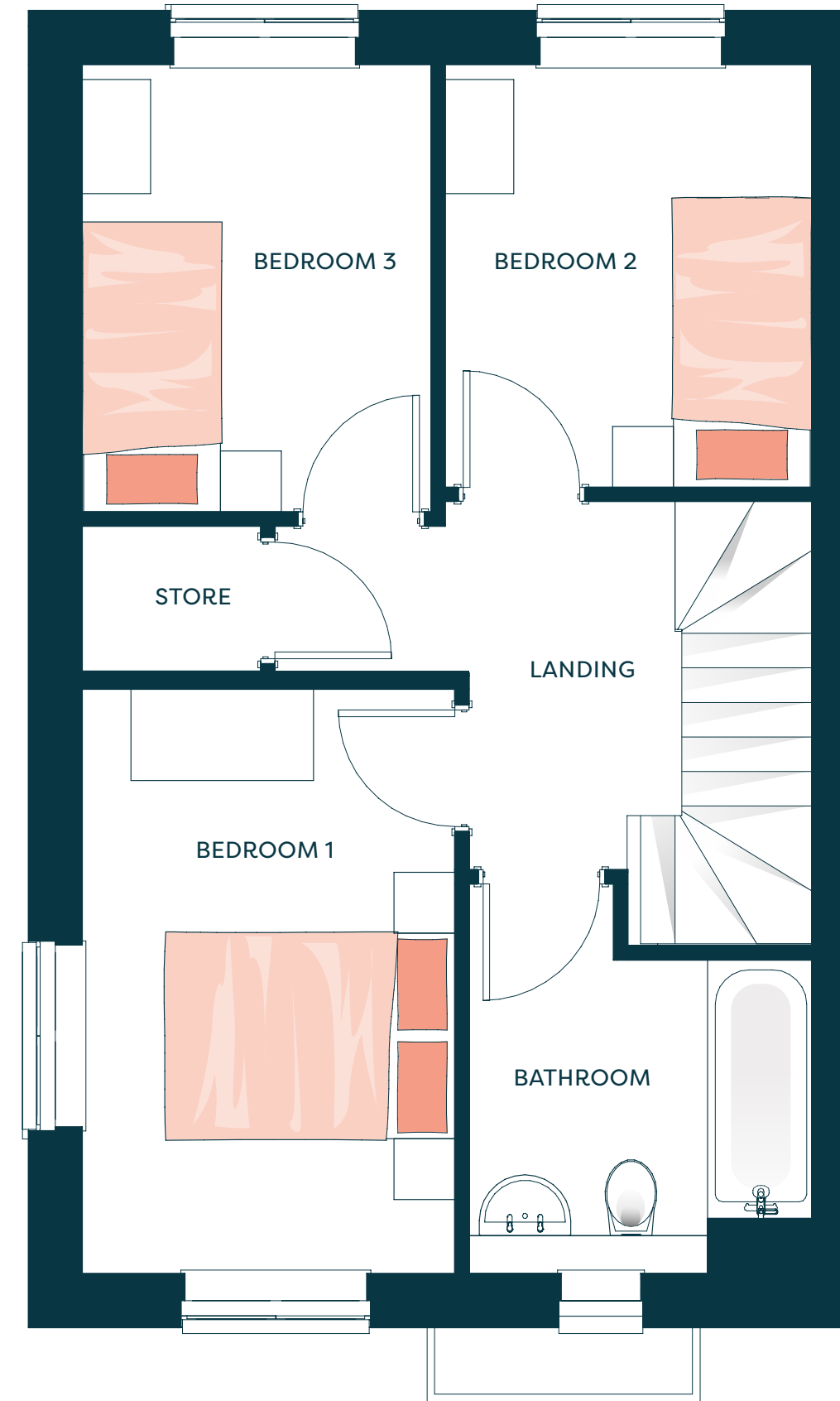
The Fulmar

Three bedroom house

807.3 sq ft (75 sq m)



GROUND FLOOR



FIRST FLOOR

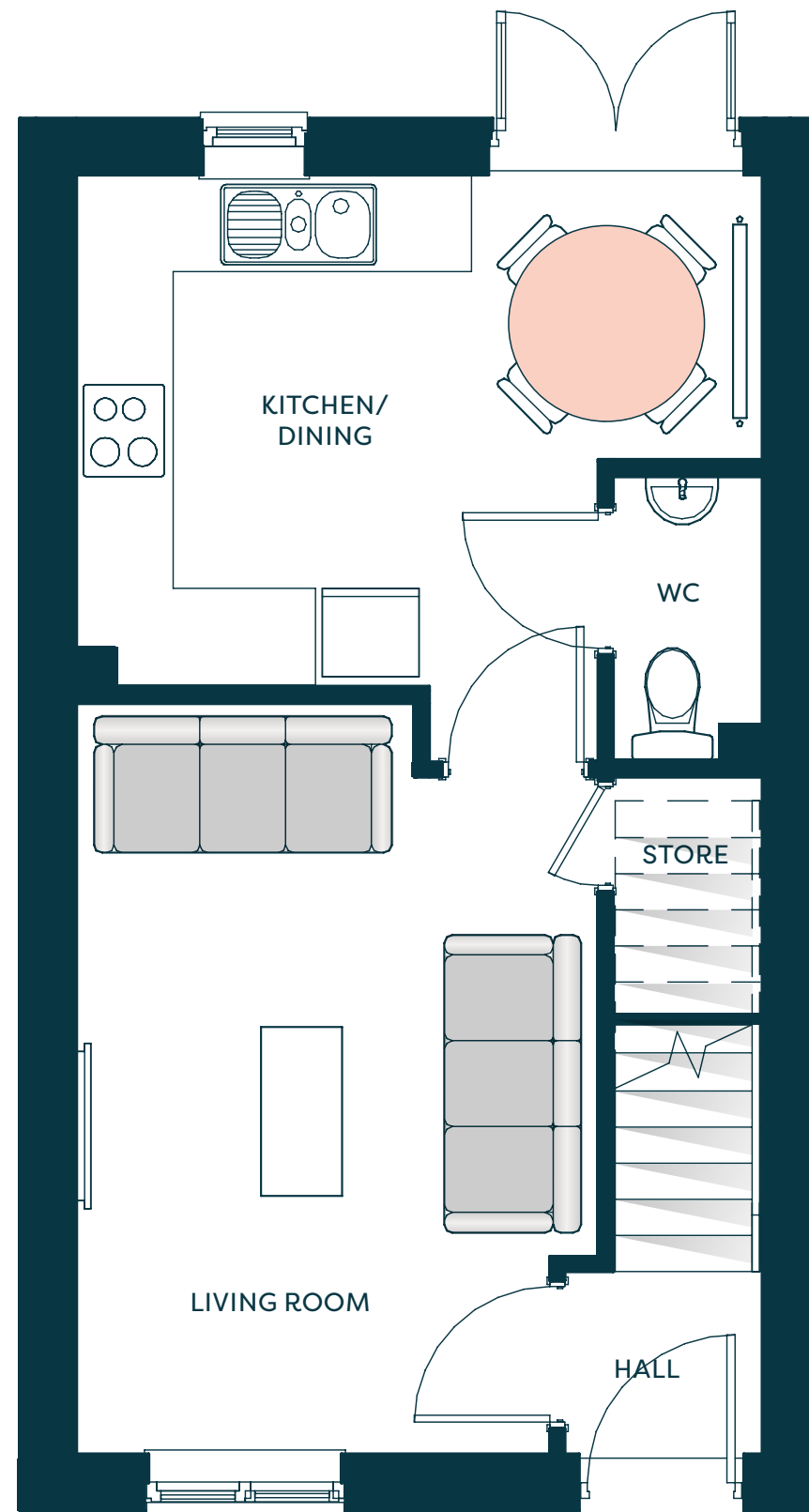
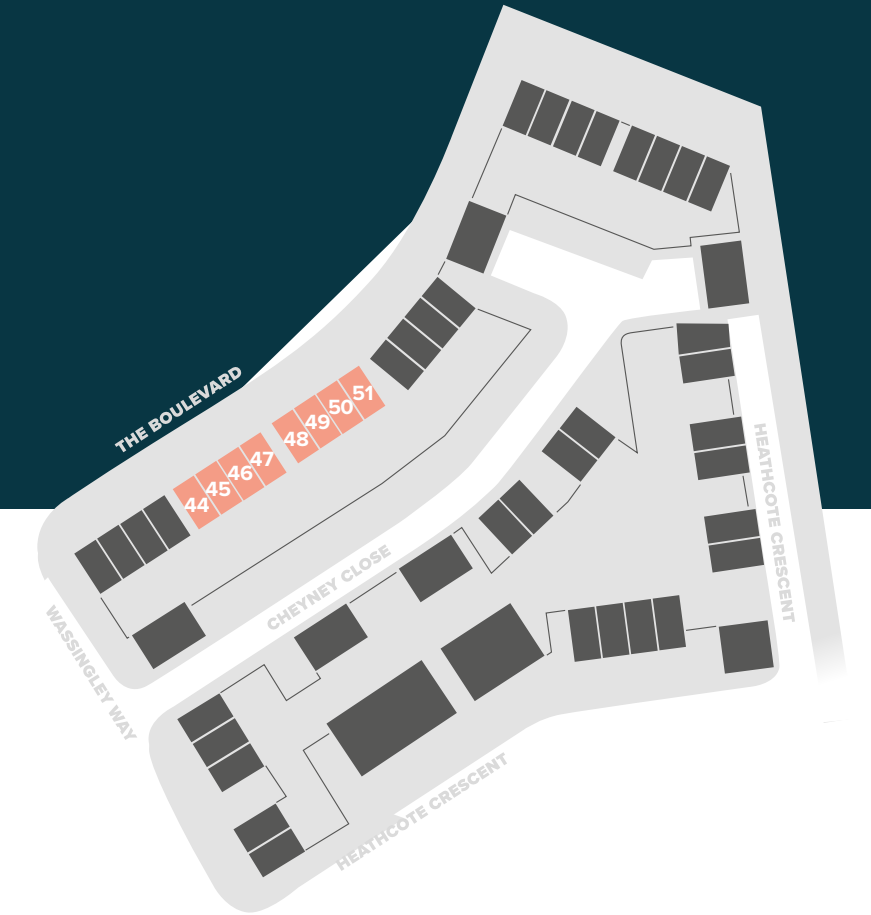




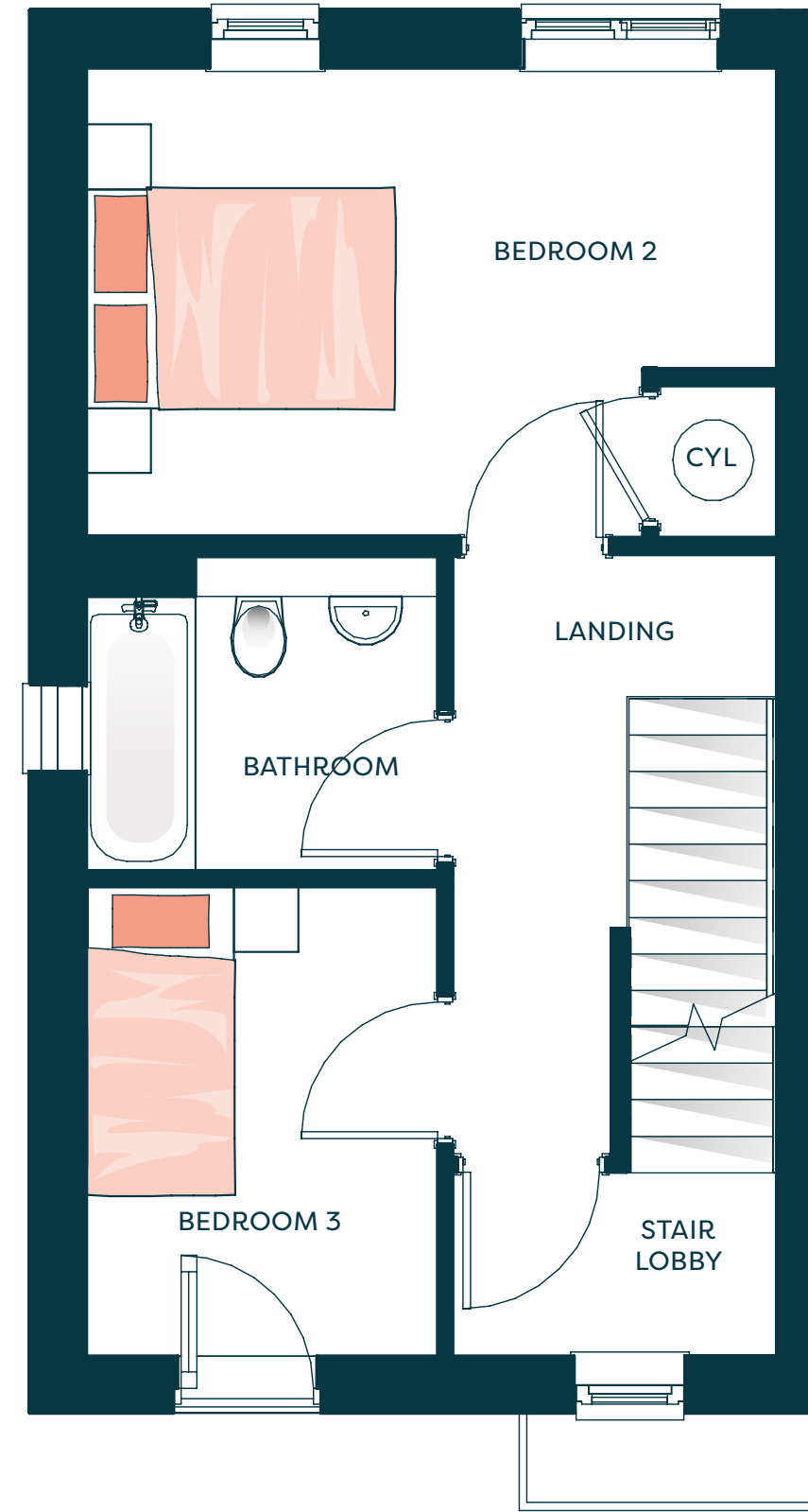
The Harrier

Three bedroom house

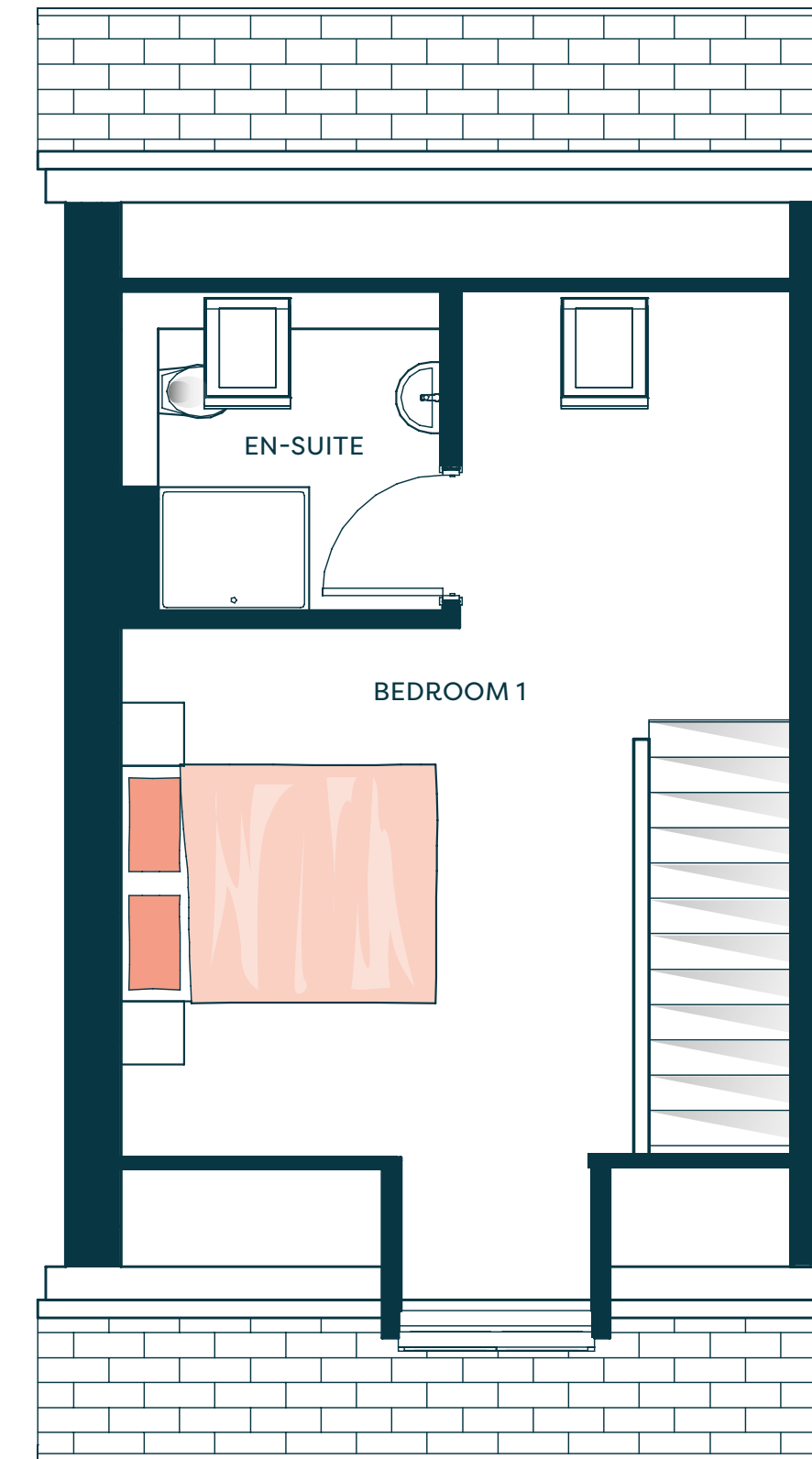
968.8 sq ft (90 sq m)



GROUND FLOOR



FIRST FLOOR



SECOND FLOOR

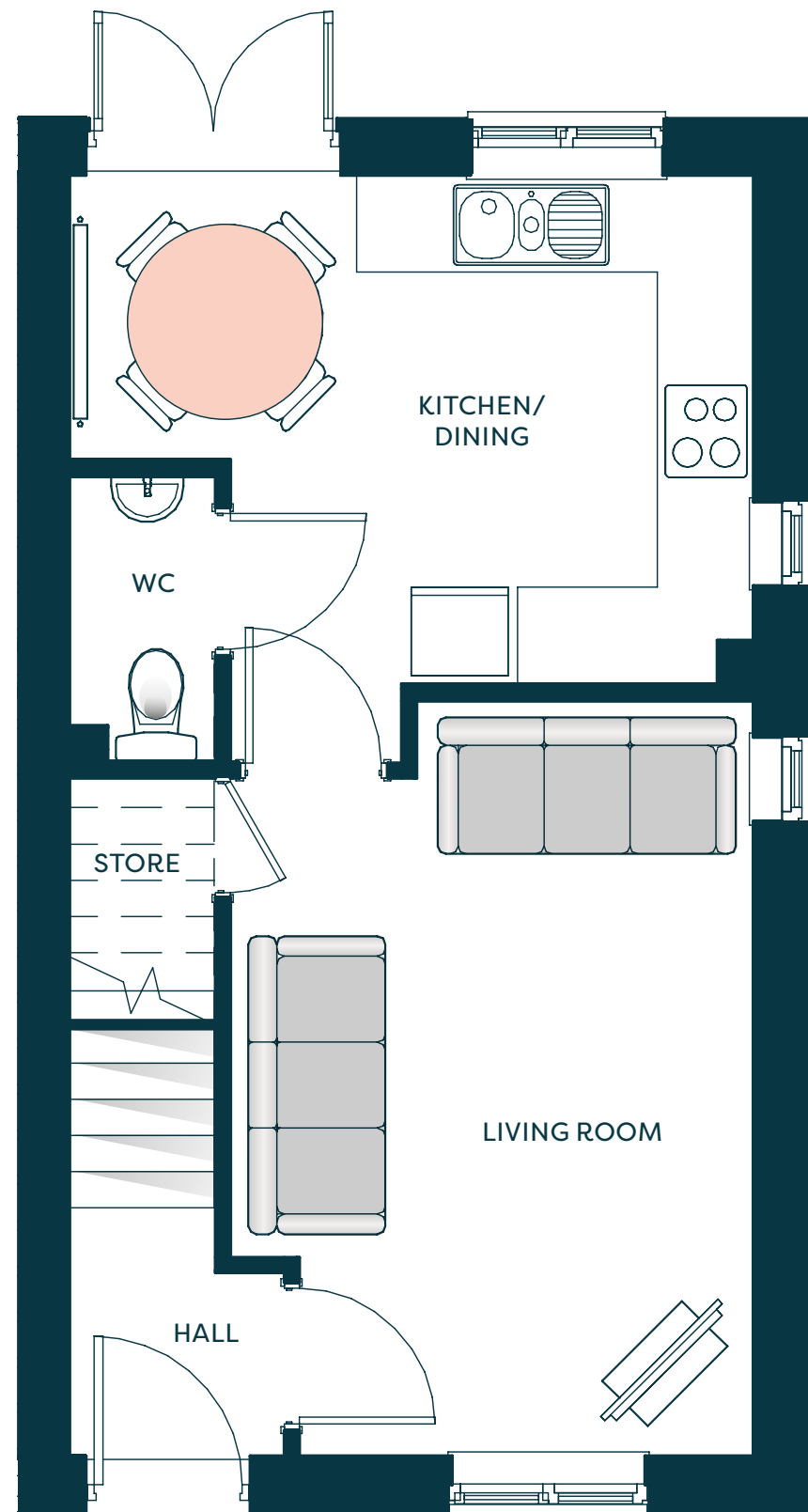




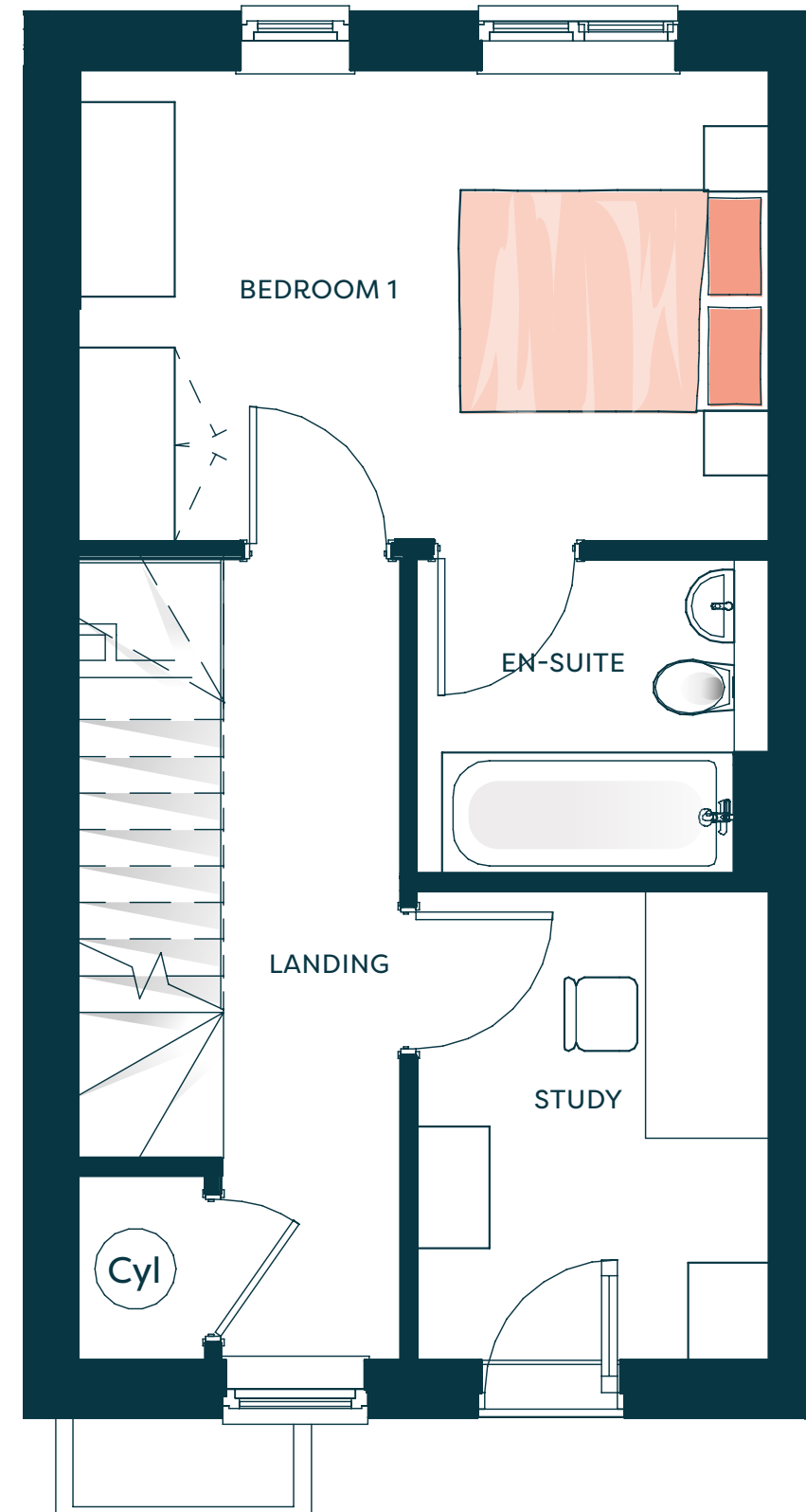
The Kingfisher

Three bedroom house

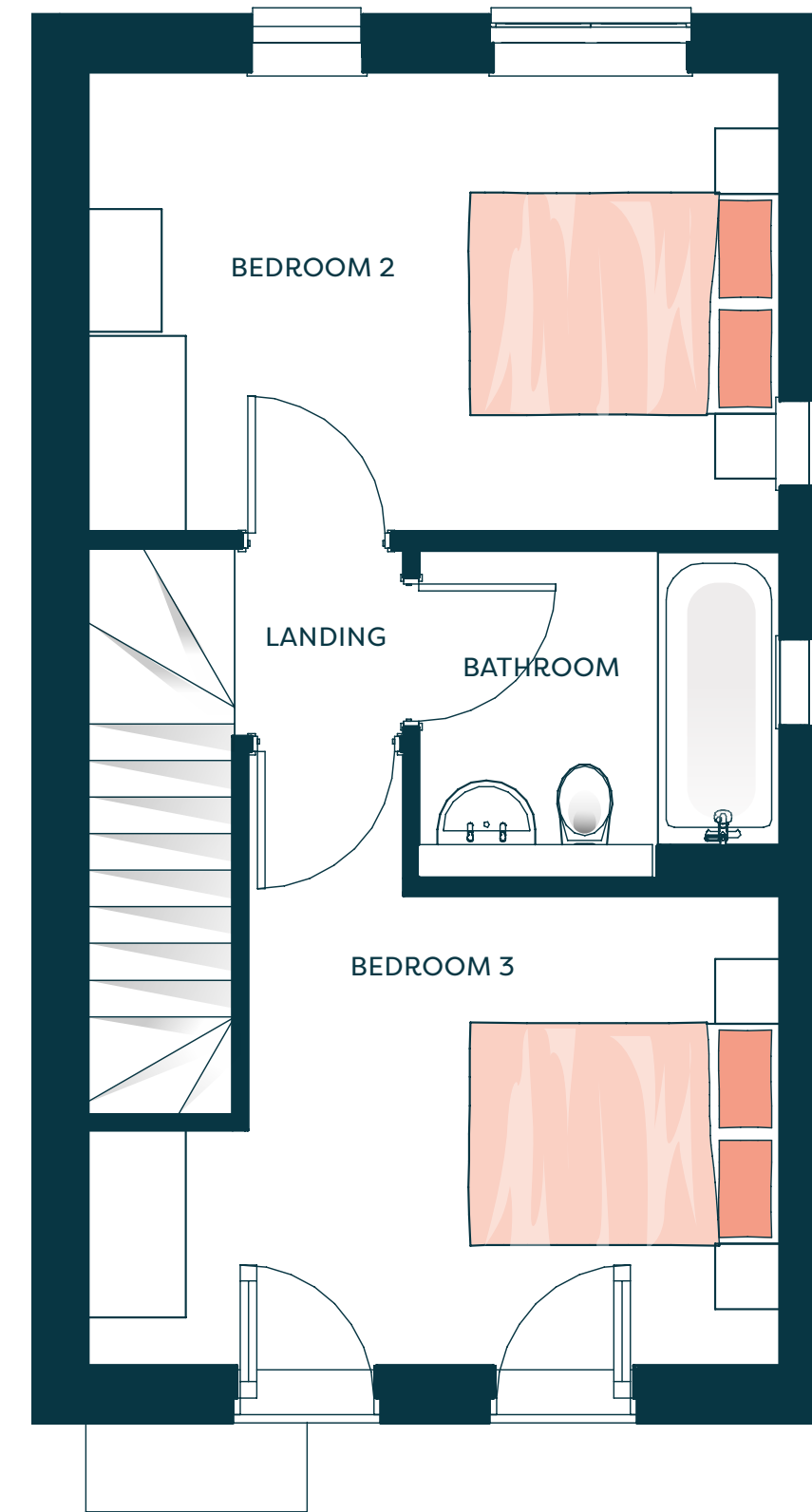
1076.4 sq ft (100 sq m)



GROUND FLOOR



FIRST FLOOR



SECOND FLOOR

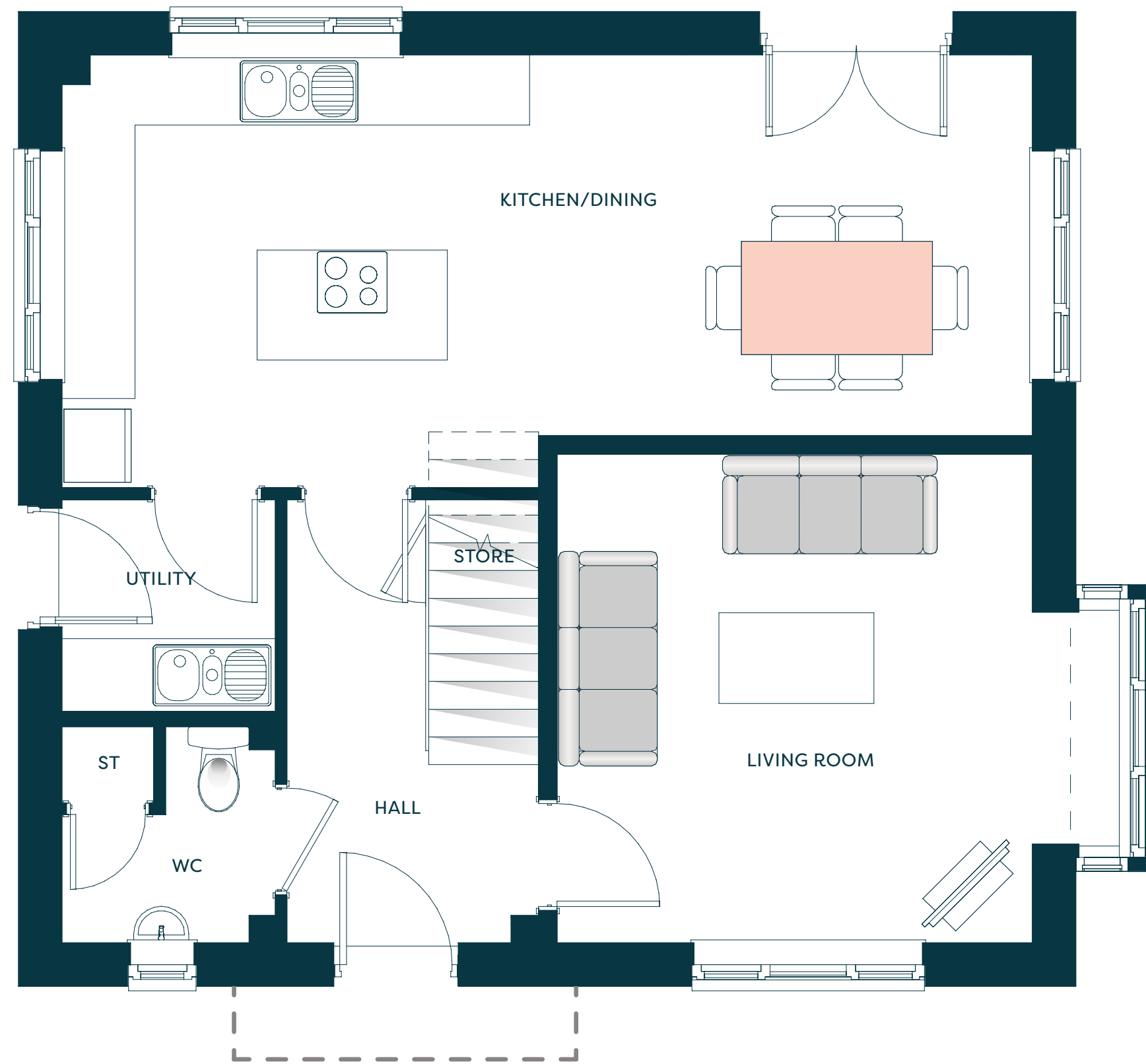




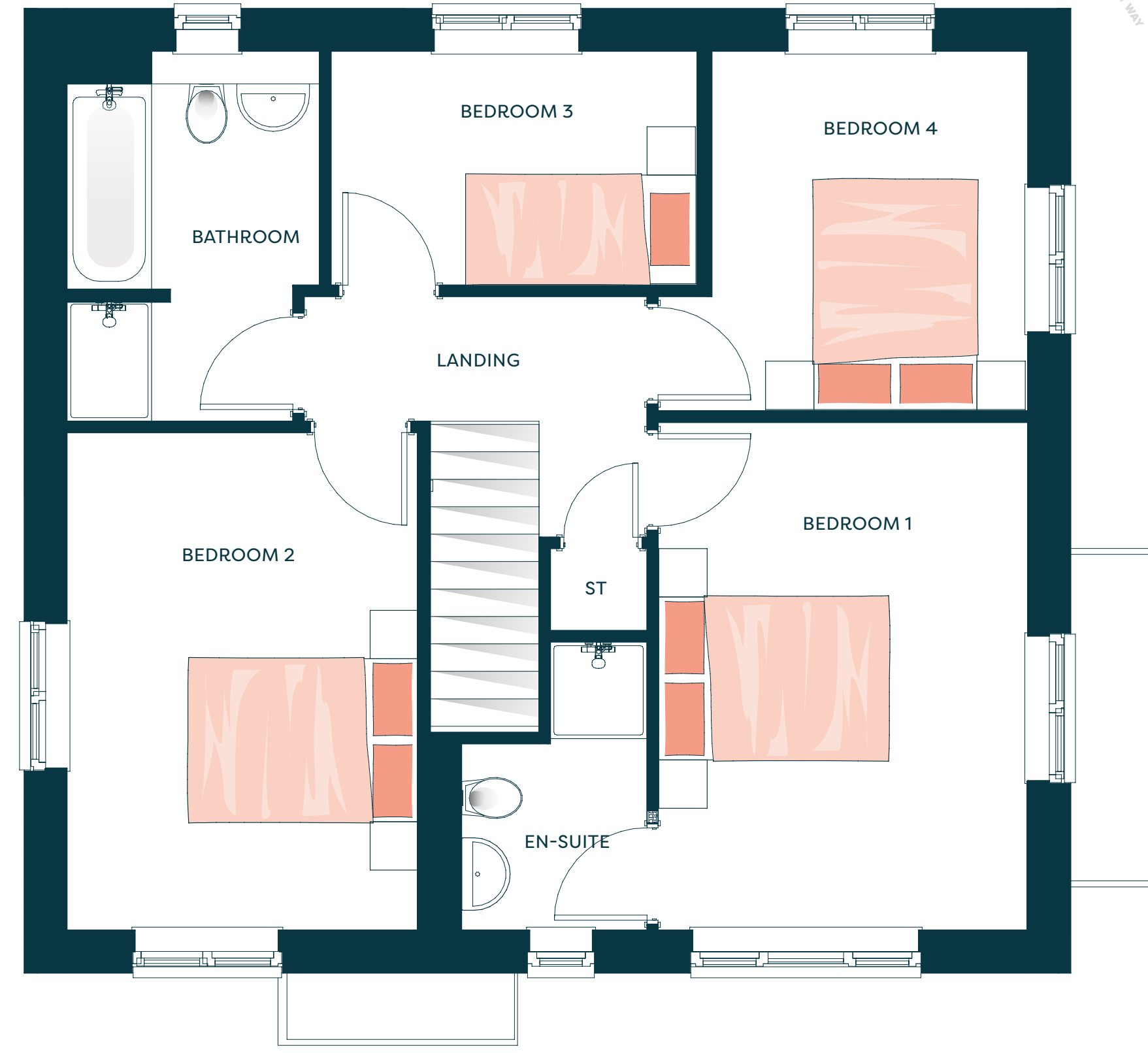
The Osprey

Four bedroom house

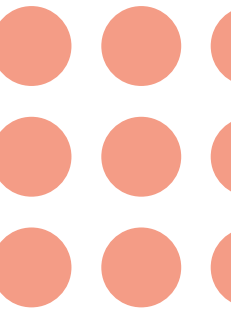
1248 sq ft (116 sq m)



GROUND FLOOR



FIRST FLOOR

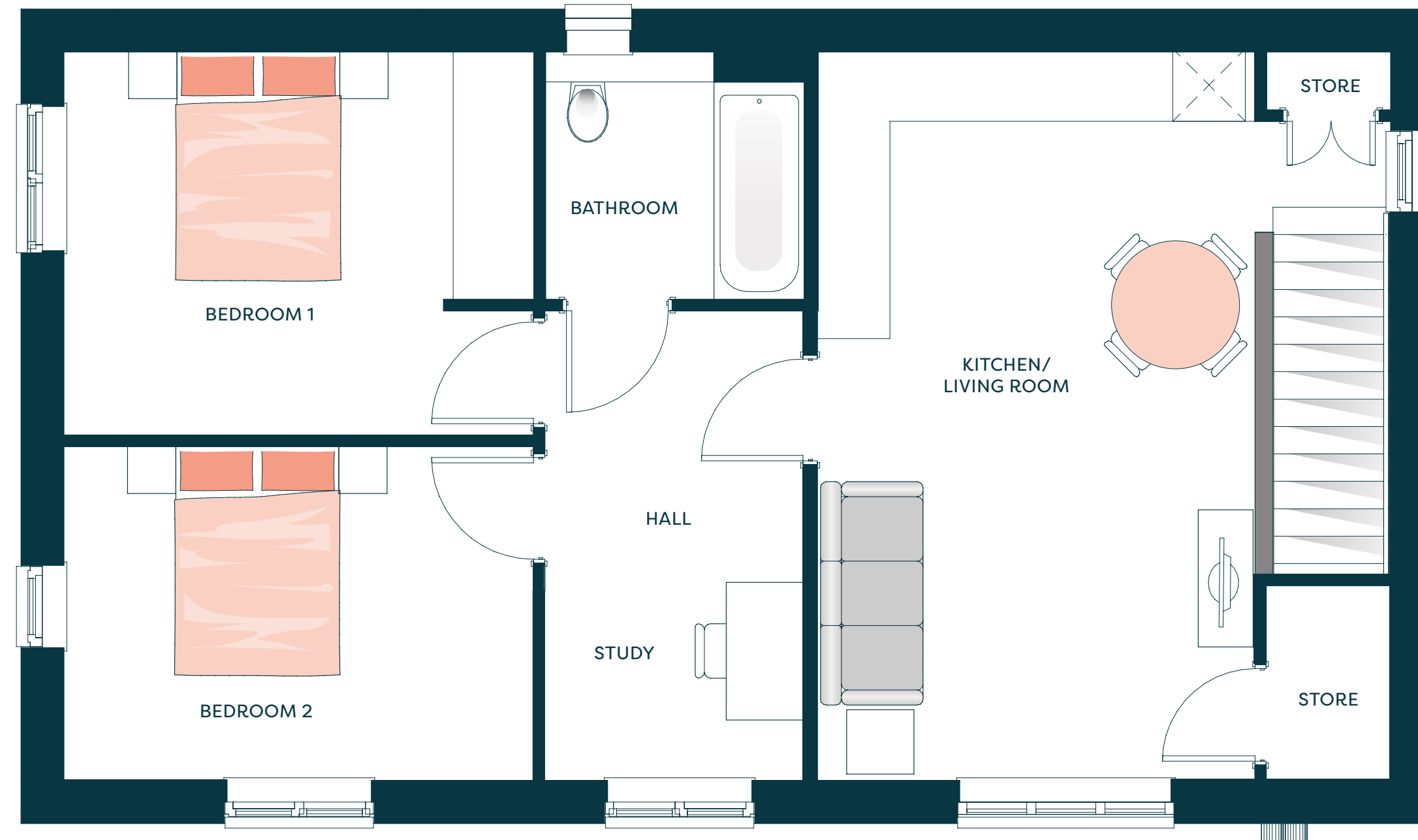




The Skylark

Two bedroom apartment

764 sq ft (71 sq m)

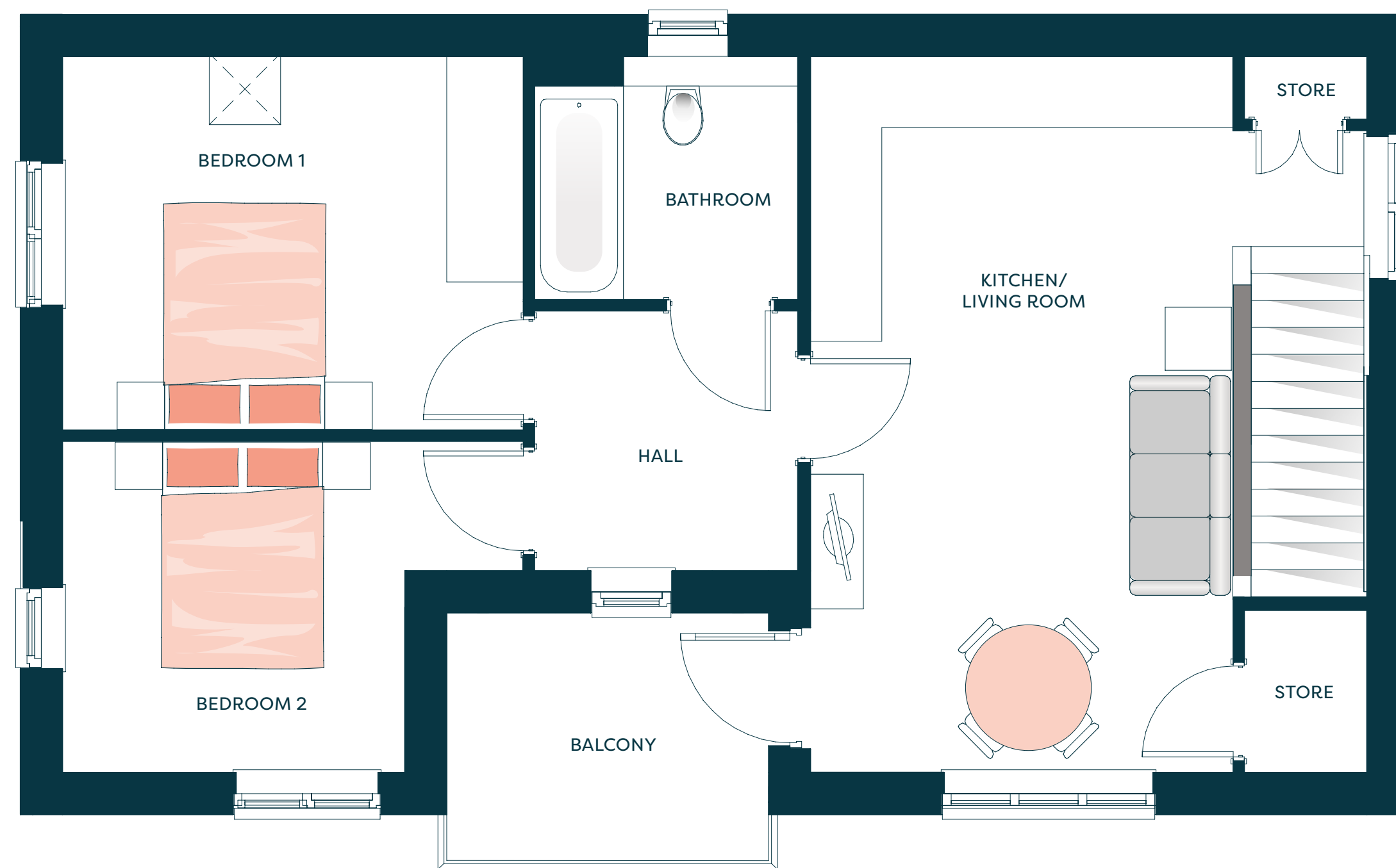
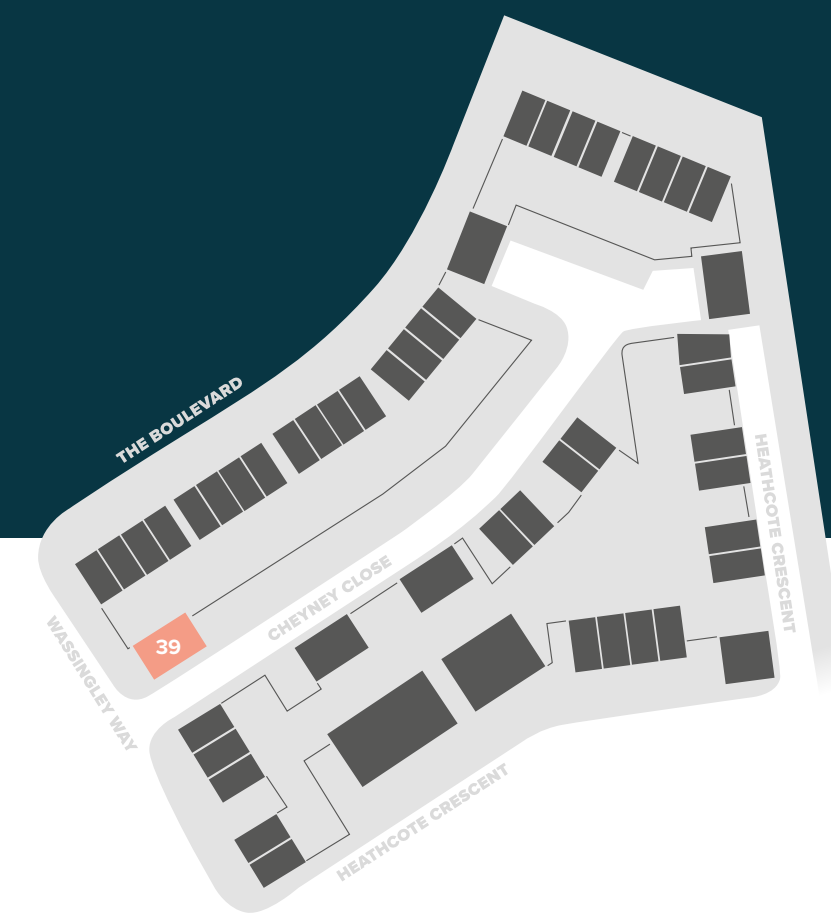




The Skylark 2

Two bedroom apartment

764 sq ft (71 sq m)

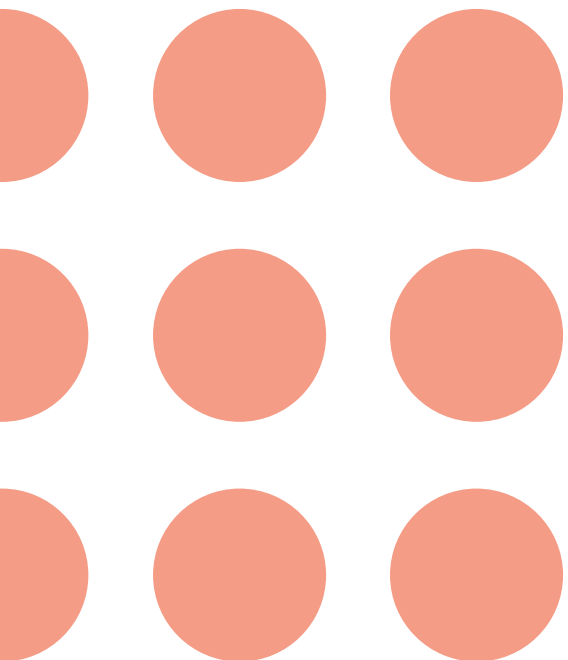
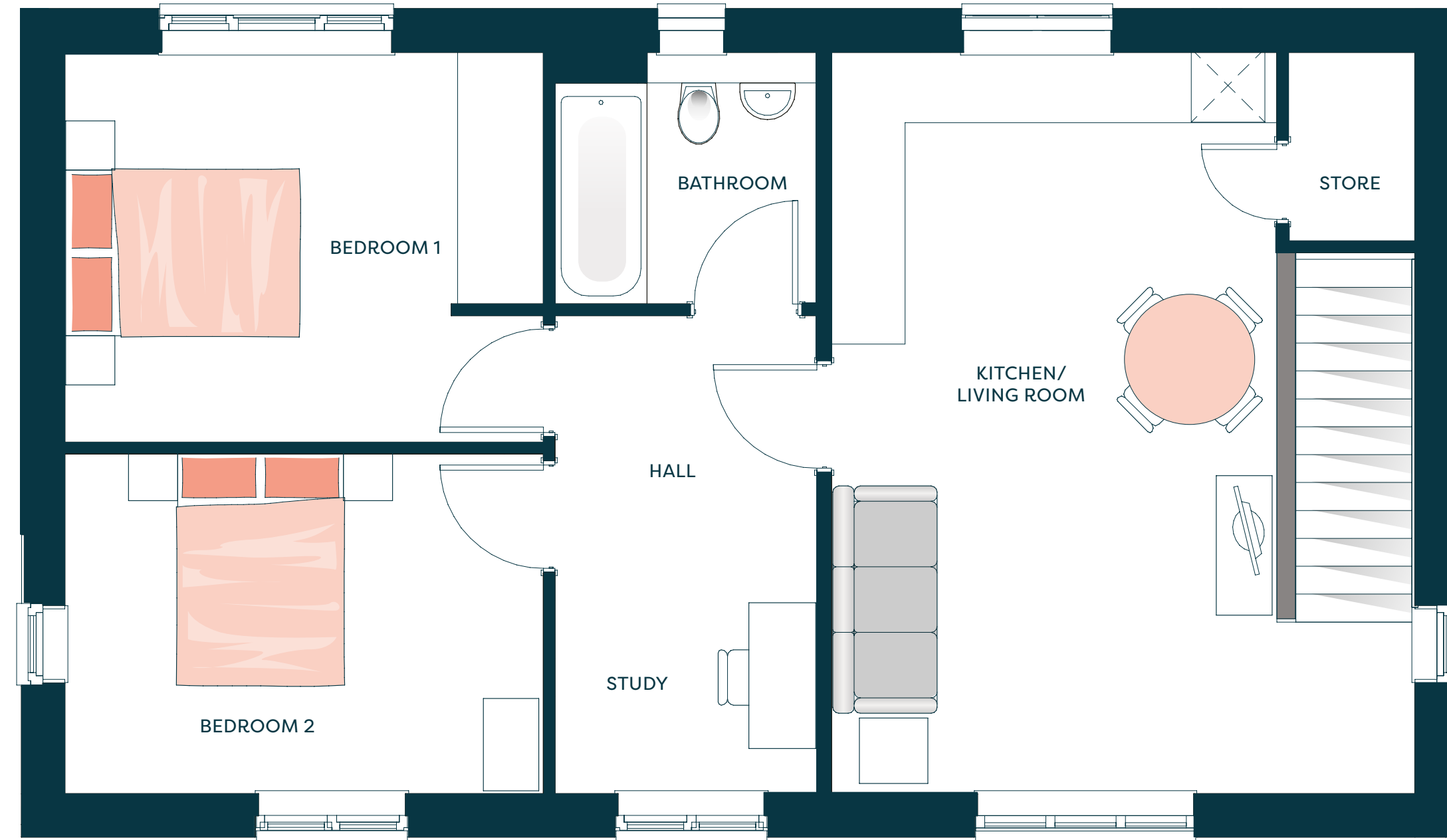




The Skylark 3

Two bedroom apartment

764 sq ft (71 sq m)





Alconbury Weald Shaping up to be a great place to live.

The Great Potential

The Hawkings is located in the new flourishing community of Alconbury Weald. A place to nurture your family, make new friends, grow your business and enjoy seasonal events and entertainment. Whether you are looking for a new home, settling in, or just visiting, come and see what Alconbury Weald has to offer.

Over the next 15 - 20 years, Alconbury Weald will deliver new homes, employment, green space, education, transport links and amenities for the community to enjoy.



5 NEW SCHOOLS



5000 NEW HOMES



290 000m²
EMPLOYMENT SPACE





Are you ready to call The Hawkings your home?

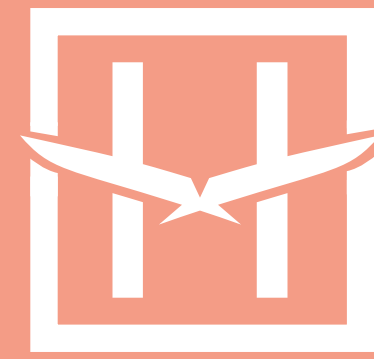
Contact us on **0300 1246773**,
email **info@thehawkings.co.uk**
or visit **thehawkings.co.uk**



PROFESSIONALLY MANAGED BY

allsop

8th Floor, Platform, New Station Street, Leeds LS1 4JB



THEHAWKINGS.CO.UK